

Parents' Page

Residential Wednesday 20th– Friday 22nd September

Such was the fabulous experience at Carlton last summer, we actually booked for this year before we left the centre! Letters were sent out in June to confirm this to parents and kit lists were emailed over the holidays. Final payments need to be made before Friday of this week—thank you to the families who have paid— in part or full so far. Children visiting the centre will not only get to experience new and exciting challenges but will have the opportunity to grow in confidence and discover new skills and abilities whilst being lead and guided all the way by the highly motivated staff team. On offer is a variety of challenging, team building activities both indoor and outdoor—depending on weather conditions.

- Thursday 14th September– School photographs
- Wednesday 20th September–Friday 22nd—Carlton Residential
- Friday 29th September– Macmillan Coffee Morning 9-10.30am
- Tuesday 3rd October—Trip to Whitby (in school time) No cost attached
- Friday 27th October– Harvest Festival
Parents welcome 1pm Break up
- Monday 6th November Staff PD Day
- Tuesday 7th November Children return to school
- Tuesday 7th November Parents' Eve 3.15 -6pm
- Wednesday 8th November Parents' Afternoon 1-3pm
- Friday 17th November– Children In Need £1 donation
- Thursday 7th December– Xmas Fayre 2pm
- Tuesday 12th December–KS2 Evening Performance 6pm
- Tuesday 14th December KS2 Afternoon Performance 1.30pm
- Tuesday 19th December KS2 Xmas Party pm
- Thursday 21st December –Xmas jumper/dinner
Christingle for parents at 1.30pm– Break up

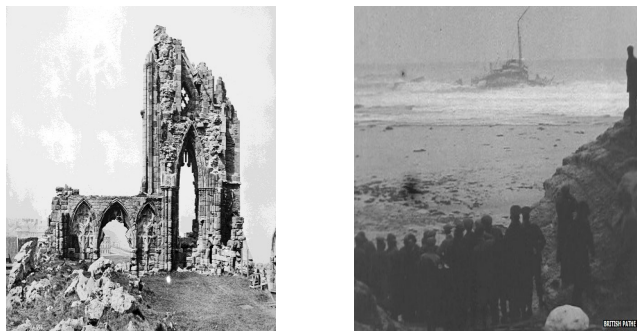
Behaviour

As you will be aware, Lingdale Primary School follows a positive behaviour plan. Children are rewarded in a variety of ways for super work, attitude to learning and behaviour. We have already awarded stickers, certificates and prizes for the fantastic attitudes we have seen. Ask them what a DOJO is!! Have you received a Dale postcard yet? There are, however, occasions where pupils can make the wrong choices. On these rare occasions, certain sanctions will be imposed. We appreciate your support in these matters.

Uniform

We are extremely impressed by the example set by your children so far—they were beautifully presented in the first week back—thank you for your efforts with this. A sea of blue greeted us! However, just so standards are clear please remember...
★ Nail varnish is not allowed.
★ Jewellery should be kept to a minimum— plain studs and a watch only.

Trips



Pannett Park Museum Whitby 03/10/23

During school time, we will be taking the children to Whitby to enhance our knowledge of WW1 and the impact on the local area. We will be visiting Pannett Park Museum and learning about the sinking of The Rohilla. A letter with more details will follow. There will be no cost attached to this visit.

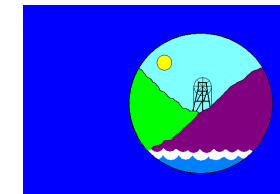
General Reminders

Breakfast Club– Paid –7.30am
Free– 8.00

Children who attend are therefore already in school, which means they are ready to learn promptly. Evidence from last year showed that pupils who arrived in school on time outperformed those who were late. If your child doesn't attend Breakfast Club, please can you ensure they are lined up at the pencils by 8.40 am. Children are given the opportunity to be heard read and carry out basic skills tasks in this time so punctuality is important. Bedtime routines and calm settled starts to the day are essential and we thank you for your support with this.

Each child has been provided with a free, new stationery kit and pencil case which they will be responsible for.

★Year 5 & 6 News★



Welcome Back– Autumn 2023

A warm welcome back to Years Five and Six! We hope you have all had a happy and restful summer. Although we have only been back for a few days, the children have impressed us with their attitude to learning! Upper Key Stage 2 looks different this year; Mrs Robson will continue to teach the children P.E, D.T, Art, Science and French. Miss Sheridan will take over the running of School Council due to Mrs Hoffman leaving us next week. We wish her all the very best in her new career. We offer a warm welcome to Mrs Dye who is now our full-time Teaching Assistant. You will be aware that we are joining the Lingfield Trust – which means that we benefit from the expertise of a wide range of staff while continuing to keep the ethos of our family school. As this is the final year at Lingdale Primary School for some pupils, we are looking forward to working with you to make this a most memorable year. We very much want your child to be happy at school and to make excellent progress.

2023 SATs

SATs Week 2024
Monday 9th - Friday 17th May

Although it may seem a long way ahead, we all know how quickly time flies by and wanted to inform you of these important dates. From day one, your child will be working upon strengthening their current knowledge in order to achieve their full potential. We understand that this can be a challenging time for some. However, staff will endeavour to provide every opportunity possible to support the children. Our only requirement is that they do their best and try hard.

**Good attendance & punctuality
ARE VITAL.**

Enrichment Opportunities

SCSS –Monday/Friday
Mrs Dye's Lego Club-Tuesday
Miss Parvin's Dance Club-Tuesday
Film Club-Wednesday
Miss Sheridan's Art Club –Thursday
There will be a £1.00 charge for all clubs



English



After retelling traditional tales such as Hansel and Gretel, we will be reading Holly Webb's novel- *Evie's War* which provides an insight into World War1. We will be using this text as a stimulus for our own writing and exploring the effects that the war had upon our local area. Our Literacy is focusing upon reading comprehension skills which are absolutely vital. We are putting into practise key skills such as reading at speed, highlighting key information and summarising. We will be looking at the power of emotive language and the impact it can have on the reader. GPS (grammar, spelling and punctuation) is a huge part of our curriculum and we will begin by consolidating past elements.

Maths

The National Curriculum expects all children from Year 4 to know all of their times tables up to and including 12. Does your child know them?

- * This term we will continue to build on our rapid recall of all the times tables (practise makes perfect!) along with squared and cubed numbers.
- * We will focus initially on place value and basic arithmetic skills- although we are aware that there are many gifted mathematicians amongst us so a high level of Challenge will always be maintained.
- * Children will need to apply efficient methods to increasingly complex and lengthier problems.

History, Geography, Art and Design Technology

Over the next half term, we will be looking into answering many of the questions already posed by the children to help them gain historical perspectives and understand historical concepts. Your child will be involved in many new learning experiences such as researching the causes of WW1, discovering the impact on the local area including the sinking of The Rohilla. DT will involve looking at frame structures following the Kapow scheme of work. Geography will be focusing on Europe and the study of a country/region.



Our History work for autumn 1 is the effects of World War I on the local area

Science Light

Children will be taught the following as well as revising prior knowledge.

- recognise that light appears to travel in straight lines
- use the idea that light travels in straight lines to explain that objects are seen because they give out or reflect light into the eye
- explain that we see things because light travels from light sources to our eyes or from light sources to objects and then to our eyes
- use the idea that light travels in straight lines to explain why shadows have the same shape as the objects that cast them

Homework/Reading

All pupils in years five and six will be given one piece of homework a week. This will be given out on a Thursday and expected back on the following Tuesday. Homework club will be available for any child needing support on a Monday breaktime. Home reading also plays an integral part of homework. At Lingdale, pupils are encouraged to read at home to an adult on a daily basis. **We are insisting that children read and return their reading diary at least 3 times a week.** They will then be entered into the weekly book draw. Thank you in advance for your support with this- hearing your child read a few pages- or paragraphs and asking a couple of questions to clarify their understanding is vital

Computing

It is incredibly important in today's world to be computer literate and have an understanding of what it is to be a digital Citizen.

The first term is spent learning how to be safe online and how to utilise spreadsheets as a tool to record information.

The second half of the term is how to use emails to effectively communicate with others.

Science Electricity

Children will be taught the following as well as revising prior knowledge.

- associate the brightness of a lamp or the volume of a buzzer with the number and voltage of cells used in the circuit.
- compare and give reasons for variations in how components function, including the brightness of bulbs, the loudness of buzzers and the on/off position of switches.
- use recognised symbols when representing a simple circuit in a diagram.

PE/Swimming Wednesdays

PE for this half term will mainly be in the form of swimming lessons.

However, as there is a tag rugby competition approaching, this will be flexible for Autumn 1.

Earrings must be removed for PE.

PSHE

We are increasingly aware of the need to address young people's mental health. Personal, social, emotional and mental health issues are addressed throughout the year. Miss Sheridan will be delivering the Jigsaw scheme of work.

★ PSHE is ongoing and is delicately addressed through specific lessons as well as aspects of other subjects.

★ Across the year, we will explore anti-bullying, mental health, and family issues such as bereavement.

RE

- * To understand the significance of the Buddhist shrine and how Buddhists can worship at home.
- * To explore how Theravadin Buddhists express their faith. To explore the concept of community in the Buddhist tradition and beyond.



French

Mrs Robson will continue to teach French this year. As the Children learn to describe a character's appearance and personality in French they will focus on ensuring adjectives and nouns agree.

Music

The children will continue to develop their ability to sing and use tuned and untuned percussion instruments preparing to perform the 1980's Bon Jovi classic "Livin' On A Prayer".