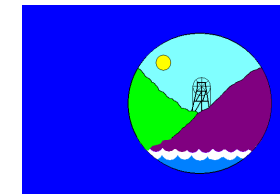


Parents' Page

★Year 5 & 6 News★



Residential

Monday 20th September– Wednesday 22nd

We are delighted to say we have secured a residential at Carlton. Children visiting the Centre will not only get to experience new and exciting challenges but will have the opportunity to grow in confidence and discover new skills and abilities whilst being lead and guided all the way by the highly motivated staff team. On offer is a variety of challenging, team building activities both indoor and outdoor— depending on weather conditions. Three days at Carlton, including transport would cost in excess of £166. Fortunately, school is in the position to be able to supplement over half of the cost which means the price is only £80 for an amazing three day experience.

Tuesday 5th October– Trip to Whitby

Monday 18th October– Parents' Evening 3-6pm

Friday 22nd October– Harvest Festival 1pm–Break up

Wednesday 3rd November–Halloween/Bonfire Disco 4.30-6pm

Thursday 25th November– Trip to Little Theatre

Monday 6th December– Xmas Fayre 2pm

W Beg 6th Dec–Family Bingo Night–Pie & Peas tbc

Monday 13th December–KS2 Evening Performance 6pm

Tuesday 14th December KS2 Afternoon Performance 1pm

Thursday 16th December KS2 Xmas Party pm

Friday 17th December –Xmas jumper/dinner

Christingle for parents at 2pm– Break up

Monday 1st– 13th September

Monday 1st November

Tuesday 4th January

Friday 8th April

Thursday 21st July PD Days

Trips



We are taking the children to **Whitby** in October to walk in the steps of the rescuers from 1914. We will be visiting museums to look at various aspects of the history of the town to complement our text *Evie's War* and taking our sketch books to record the beauty of the town. There will be no cost attached to this visit.

Middlesbrough Little Theatre

The children will be going to the theatre to experience the awe and wonder of a live performance of *A Christmas Carol* on the evening of Thursday 25th November. As usual, school continues to supplement the cost of all visits which enhance the children's Cultural Capital. More details to follow.



Behaviour

As you will be aware, Lingdale Primary School follows a positive behaviour plan. Children are rewarded in a variety of ways for super work, attitude to learning and behaviour. We have already awarded stickers, certificates and prizes for the fantastic attitudes we have seen. Have you received a Dale post-card yet? There are, however, occasions where pupils can make the wrong choices. On these rare occasions, certain sanctions will be imposed. We appreciate your support in these matters.

Uniform

We are extremely impressed by the example set by your children so far—they were beautifully presented in the first week back—thank you for your efforts with this. A sea of blue greeted us! However, just so standards are clear please remember...

★Nail varnish is not allowed.

★ Jewellery should be kept to a minimum— plain studs and a watch only.

General Reminders

We are now in the position to re-open both of our Breakfast Clubs. Children who attend are therefore already in school, which means they are ready to learn promptly. Evidence from last year showed that pupils who arrived in school on time outperformed those who were late. If your child doesn't attend Breakfast Club, please can you ensure they are lined up at the pencils by 8.45 am. Children are given the opportunity to be heard read and carry out basic skills tasks in this time so punctuality is important.

Bedtime routines and calm settled starts to the day are essential and we thank you for your support with this.

Each child has been provided with a free, new stationery kit and pencil case which they will be responsible for.

Welcome Back– Autumn 2021

A warm welcome back to Years Five and Six! We hope you have all had a happy and restful summer. Upper Key Stage 2 looks different this year as we are delighted that Mr Fairbridge has joined us. Children will be streamed on a morning and taught as one class for afternoon lessons. We think this will be a successful model which will result in rapid learning and progress. Although we have only been back for a few days, the children have impressed us with their attitude to learning!

As this is the final year at Lingdale Primary School for some pupils, we are looking forward to working with you to make this a most memorable year. We very much want your child to be happy at school and to make excellent progress.

Please do not hesitate to contact us if you want to discuss anything, need information or have concerns you would like to share. We can't solve a problem unless we know it exists! (Y5/6@Lingdale.org)

2022 SATS

SATS Week 2022
Monday 9th - Friday 13th May

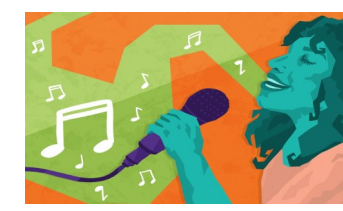
Although it may seem a long way ahead, we all know how quickly time flies by and wanted to inform you of these important dates. From day one, your child will be working upon strengthening their current knowledge in order to achieve their full potential. We understand that this can be a challenging time for some. However, staff will endeavour to provide every opportunity possible to support the children. Our only requirement is that they do their best and try hard.

Good attendance & punctuality ARE VITAL.

Enrichment Opportunities

Following on from positive comments and thoughtful suggestions on the family questionnaires, we have decided to continue with the after school Sports Club which will run on Mondays this term. For those not so keen on sporting activities, we are now delighted to say that KS2 pupils will have the opportunity to attend singing/drama club with Robyn on Tuesday and a Computer Coding Club with Mr Fairbridge on a Thursday.

All clubs remain FREE OF CHARGE!



English



We will be reading Holly Webb's novel—*Evie's War* which provides an insight into World War I. We will be using this text as a stimulus for our own writing and explore the effects that war had on families locally.

Our Literacy is focusing upon reading comprehension skills which are absolutely vital. We are putting into practise key skills such as reading at speed, highlighting key information and summarising. We will be looking at the power of emotive language and the impact it can have on the reader.

GPS (grammar, spelling and punctuation) is a huge part of our curriculum and we will begin by consolidating past elements before introducing higher-level terminology such as *modal verbs*, and *determiners*.

Maths

The National Curriculum expects all children from Year 4 to know all of their times tables up to and including 12. Does your child know them?

- * This term we will continue to build on our rapid recall of all the times tables (practise makes perfect!) along with squared and cubed numbers.
- * We will focus initially on place value and basic arithmetic skills— although we are aware that there are many gifted mathematicians amongst us so a high level of Challenge will always be maintained.
- * Children will need to apply efficient methods to increasingly complex and lengthier problems.

History, Geography and Art + Design

Over the next term, we will be looking into answering many of the questions already posed by the children to help them gain historical perspectives and understand historical concepts.

Your child will be involved in many new learning experiences:

Researching the causes of WW1 and discovering who the true heroes were.

Studying the work of artist Joseph Turner.

Researching Victorian Britain comparing life in a wealthy family to those living in poverty.

Designing and creating our themed afternoon tea menu—did you know the Victorians introduced the concept of afternoon tea?

Our themed work for autumn 1 is the effects of World War I on the local area

Our themed work for autumn 2 is children in the Victorian era

Science

Light

Recognise that light appears to travel in straight lines.

Use the idea that light travels in straight lines to explain that objects are seen because they give out or reflect light into the eye.

Explain that we see things because light travels from light sources to our eyes or from light sources to objects and then to our eyes.

Use the idea that light travels in straight lines to explain why shadows have the same shape as the objects that cast them.

Homework/Reading

All pupils in years five and six will be given one piece of homework a week. This will be given out on a Thursday and expected back on the following Tuesday. Homework Club will be available for any child needing support on a Monday lunchtime. Home reading also plays an integral part of homework. At Lingdale, pupils are encouraged to read at home to an adult on a daily basis. **We are insisting that children read and return their reading diary at least 3 times a week.** They will then be entered into the weekly book draw. Thank you in advance for your support with this—there has been a lot of lost learning due to Lockdowns and it is vital we plug any gaps promptly.

Computing

Networks-

Sharing information

Use a variety of software
Create content

Programming

Use logical reasoning to explain simple algorithms

Decomposition of programs

Selection in programs

Science

Electricity

Associate the brightness of a lamp or the volume of a buzzer with the number and voltage of cells used in the circuit.

Compare and give reasons for variations in how components function, including the brightness of bulbs, the loudness of buzzers and the on/off position of switches.

Use recognised symbols when representing a simple circuit in a diagram.

PE

As you know, Mrs Bell retired in July therefore, Mr Fairbride and Mrs Norris will be teaching Physical Education on Monday afternoons. Please ensure your child wears their P.E kit to school on this day. All children were given a blue polo shirt last year— if this is now too small, you can order them from Mrs Bates at a cost of £5. Please ensure they have layers suitable for both indoors and outdoors as we know how changeable the British autumn weather can be! Children will apply skills and tactics suitable for attacking and defending and play competitive games such as hockey and tag rugby.

Earrings must be removed for PE. P.E—including swimming is a statutory lesson that all children must participate in.

PSHE

We are increasingly aware of the need to address young people's mental health. Personal, social, emotional and mental health issues are addressed throughout the year.

★ PSHE is ongoing and is delicately addressed through specific lessons as well as aspects of other subjects.

★ Across the year, we will explore anti-bullying, mental health, and family issues such as bereavement.

We value the expertise and support of Mrs Stephenson in these areas.

RE

- * Why is the Buddha important for Buddhists?
- * How do Buddhist beliefs affect the way Buddhists live their lives?
- * Why is the birth of Jesus important to Christians?



French Rachel Hawkes Scheme

Revision of phonics
Masculine and feminine nouns
Speaking, Listening and Responding

Music

Delivered by Tees Valley Music Services
Recap of recorder
Introduction to "Toot Flute"