

# Parents' Page

## Important diary dates...

**Monday 6<sup>th</sup> September** – FREE breakfast club opens for Reception to Y6 8.15am

**Monday 13<sup>th</sup> September** –PD Day 2 – school closed

**Tuesday 12<sup>th</sup> October** – class visit to York Chocolate Story. Further information to follow.

**Monday 18<sup>th</sup> October** – Parent's evening 1 (3-6pm)

**Friday 22<sup>nd</sup> October** – Harvest Festival @1pm  
Break up for half term

**Monday 1<sup>st</sup> November** – PD Day – school closed

**Wednesday 3<sup>rd</sup> November** – Halloween/Bonfire Disco Reception – Y6 (4.30-6pm)

**Monday 6<sup>th</sup> December** – Xmas Fayre 2pm

**Week beginning 6<sup>th</sup> December** (Date TBC) – Family bingo night with pie and pea supper

**Monday 13<sup>th</sup> December** – KS2 Evening Xmas performance at 6pm for parents.

**Tuesday 14<sup>th</sup> December** – KS2 afternoon Xmas performance.

**Thursday 16<sup>th</sup> December** – KS2 Xmas party.

**Friday 17<sup>th</sup> December**—Xmas dinner day and Christingle . Break up for Xmas

## Behaviour

As you will be aware, Lingdale Primary School follows a positive behaviour plan. Children are rewarded in a variety of ways for super work, attitude to learning and behaviour. We have already awarded stickers, certificates and prizes for the fantastic attitudes we have seen. Have you received a Dale postcard yet?

There are, however, occasions where pupils can make the wrong choices. On these rare occasions, certain sanctions will be imposed. We appreciate your support in these matters.

## Uniform

We are extremely impressed by the example set by your children so far—they were beautifully presented in the first week back—thank you for your efforts with this. A sea of blue greeted us! However, just so standards are clear please remember...  
★ Nail varnish is not allowed.  
★ Jewellery should be kept to a minimum—plain studs and a watch only.

## P.E Days

P.E days will be **Monday and Friday** in year 3/4. Please ensure that your child comes to school wearing their light blue P.E top, appropriate trousers/leggings and trainers on those days. Please be aware that children must remove earrings for P.E. lessons and have hair tied back.  
Thankyou.

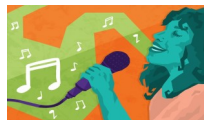
## Homework & Reading

We expect to see your child's 'Home Reading Diary' in school every day. The children will be entered into a prize draw on a Friday if they have **read three times or more** at home.

Homework hand in day: **Tuesday**

Spelling test day: **Friday**

Thank you in advance for your support with this— there has been a lot of lost learning due to Lockdowns and it is vital we plug any gaps promptly.



**Article 15** (Every child has the right to meet with other children and to join groups and organisations)

## Enrichment Opportunities

Following on from positive comments and thoughtful suggestions on the family questionnaires, we have decided to continue with the after school Sports Club which will run on Mondays this term. For those not so keen on sporting activities, we are now delighted to say that KS2 pupils will have the opportunity to attend singing/drama club with Robyn on Tuesday and a Computer Coding Club with Mr Fairbridge on a Thursday.

**All clubs remain FREE OF CHARGE!**

## General Reminders

We are now in the position to re-open both of our Breakfast Clubs. Children who attend are therefore already in school, which means they are ready to learn promptly. Evidence from last year showed that pupils who arrived in school on time outperformed those who were late. If your child doesn't attend Breakfast Club, please can you ensure they are lined up at the pencils by 8.45 am. Children are given the opportunity to be heard read and carry out basic skills tasks in this time so punctuality is important. Bedtime routines and calm settled starts to the day are essential and we thank you for your support with this.

# ★Year 3 & 4 News★



## Welcome Back— Autumn 2021



We would like to say a big warm welcome to our class newsletter. We hope that you have had a lot of fun with your child(ren) during the summer holidays. It has been so interesting listening to the stories about the holidays. The children have already shown that they are ready for Year 3 & 4 and have settled in perfectly.

We understand that for some children moving into KS2 can be a daunting experience but we aim to ensure that they feel settled and secure. All of your children have a new teacher this year and I can already see their willingness to learn. We have been looking at the different starting points for the children and have planned a curriculum that will cater for their differing needs. The first few weeks will ensure that children feel safe and confident in their learning environment and give children time to develop relationships with ourselves and their peers. Most importantly, we want the children to 'be the best that they can be' and ensuring they are happy at school is the first step to helping them do this.

Our topic for this term is 'Where on Earth does it come from?' We will be exploring where food comes from with a focus on chocolate. The children will learn to locate the world's Rainforests and explore why they are a good environment for cocoa beans to grow. They will learn about Fairtrade and the process of chocolate making from bean to bar. In Autumn 2, the children will read Charlie and the Chocolate factory and design their own chocolate bars.

Please do not hesitate to contact us if you want to discuss anything, need information or have concerns you would like to share. We can't solve a problem unless we know it exists! (Y3/4@Lingdale.org)

Kind regards,  
Mrs Jones and Miss Sheridan

## School Trip



We would like to take the children to visit York Chocolate story as part of our 'Where on Earth does it come from?' topic. The children will experience what it is like inside a chocolate factory as well as learning about the process of making chocolate from bean to bar. The children will also get chance to make some of their very own!

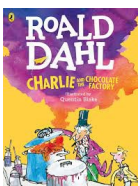
The trip will take place on Tuesday 12<sup>th</sup> October. There will be a £10 donation cost for this trip but more details of paying arrangements and timings etc. will follow in a separate letter further into the half term.

## Working Together To Be The Best We Can Be'



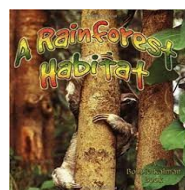
## English

Our Literacy is initially focusing upon non-chronological reports. The children will be practising their skills of retrieval to find out information about the Rainforest. They will learn the organisational devices of a report and begin to organise their own information to write sentences, paragraphs and their own reports. The children will also learn how to write explanation texts as they learn about the process of chocolate making.



Later in the term, our focus will shift to fiction texts as we read Roald Dahl's Charlie and the Chocolate Factory and explore the characters and setting. The children will practise their descriptive and persuasive writing.

GPS (grammar, spelling and punctuation) is a huge part of our curriculum and we will begin by consolidating past elements before introducing further conjunctions to express, time, place and cause, fronted adverbials, and expanded noun phrases. Every child is at a different stage in their learning and therefore GPS activities will be planned to suit your child's ability level. Reading continues to be the cornerstone of learning and this will be supported through guided reading and regular reading with the children.



## Maths

The National Curriculum expects all children from Year 4 to know all of their times tables up to and including 12. Does your child know them?

- \* This term we will continue to build on our rapid recall of all the times tables (practise makes perfect!)
- \* We will begin with place value before learning about the four operations - these skills are instrumental in gaining a deeper understanding of all aspects of maths.
- \* We will also begin our work on time and recap shape.



## Music

Delivered by Tees Valley Music Services

The children will be learning to play the recorder.

## French

Understand the location of France and key areas. Appreciate stories, songs, poems and rhymes in French. Learn to ask and answer simple questions.

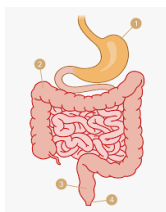
Our themed work for autumn 1 is focused on the Rainforest and cocoa beans to chocolate bars.

Our themed work for autumn 2 is based around Charlie and the Chocolate Factory and Fairtrade.

## Science

Our Science topics are based around Animals including Humans.

In the first half term children will learn about Living things and their Habitats. They will learn to recognise that living things can be grouped in a variety of ways, talk about how things can be grouped and why and explore/use Classification keys to help group, identify and name a variety of living things. Children will construct a variety of food chains, identifying producers, predators and prey.



In the second half of the term, children will learn to describe the simple functions of the basic parts of the digestive system. They will identify the different types of teeth in humans and their simple functions as well as writing instructions about how to brush teeth. They will also make comparisons of different animals' teeth.

## Article 19

The right to an education

## Computing

With the ever changing face of digital interaction, our focus will be on building key skills in the following areas

Word processing

Presentations

Children will also be introduced to the use of search engines to research topics and we will be talking about how to stay safe online

## Global Citizens

Throughout the curriculum, children will continue to develop their understanding of children's rights. We will also begin to think about how we can become good global citizens and we will start to learn about the new Global Goals for Sustainable development. The children will be talking about responsible consumption.

**Article 14** Every child has the right to think and believe what they want and to practise their religion, as long as they are not stopping other people from enjoying their rights.

**Article 24** Every child has the right to the best possible health.

## RE

We will be discussing the following questions:

What do religions say about the environment?

How and why do Hindus celebrate Diwali?

Christmas  
Why is Advent important to Christians?

## PE

As you know, Mrs Bell retired in July therefore, Mrs Thornton and Mrs Jones will be teaching Physical Education on Monday and Friday afternoons.

Please ensure your child wears their P.E kit to school on this day.

Children will apply skills and tactics suitable for invasion games.



They will also be developing their skills in Dance.

## PSHE

We are increasingly aware of the need to address young people's mental health. Personal, social, emotional and mental health issues are addressed throughout the year.

PSHE is ongoing and is delicately addressed through specific lessons as well as aspects of other subjects.

Our focus for this half term is:

- \* Me and my relationships
- \* Rights and responsibilities

We value the expertise and support of Mrs Stephenson in these areas.

## Art

In Art children will continue to practise their sketching skills. They will also be learning to draw using a range of different media and create collages. In the second half of the term, children will explore the work of Quentin Blake and will learn how to illustrate like him.

## Design and Technology

Understand seasonality, and know where and how a variety of ingredients are grown, reared, caught and processed Fair Trade cooking. Later, children will be designing and making their packaging for their own chocolate bar. They will use computer designs to do this.